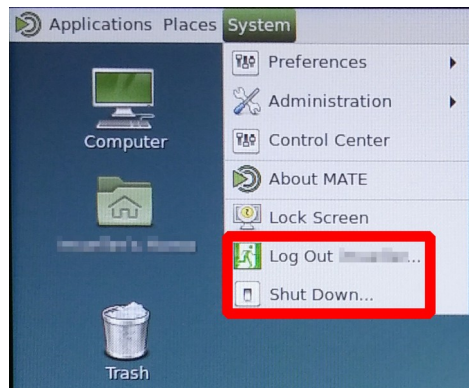
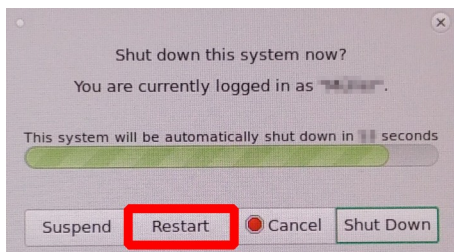


Shut down Linux (Log out)

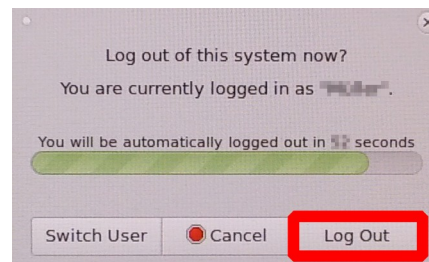
1.) Select **System**
at **top left** corner of the screen.



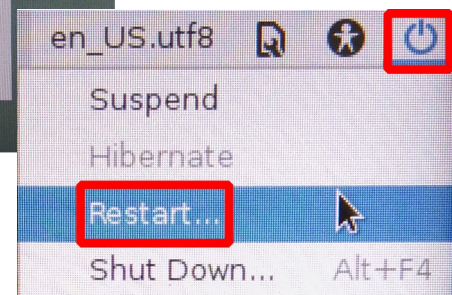
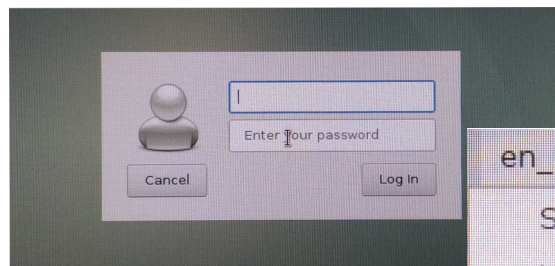
- Click on **Restart**
to start-up **Windows**.
In the next window, select **Restart**.



- Click on **Log Out User ...**
to close user account.
In the next window, select **Log Out**.
Linux is **not** turned off!



2.) If **Login window** is displayed,
click on the **start-up button**
at the **top right corner**
of the screen.
Select **Restart ...**
to start-up **Windows**.



Finally, **confirm** the **Restart**.

